

**SIMCO - Standard Injection Molding Co.**

2027 State Rd. 64 West

P.O. Box 997

Avon Park, FL 33826 US

**Phone:** 800-780-9090 • **Fax:** 863-452-6200**E-Mail:** simco@simcobox.com • **Web site:** www.simcobox.com

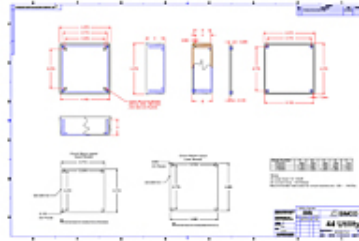
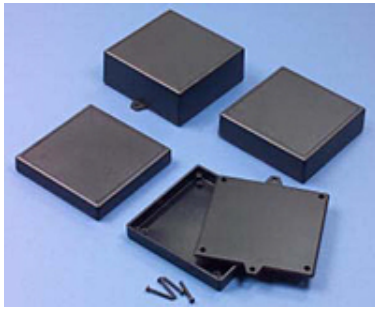
## 4 Outlet Electrical Plastic Enclosures



These new SATURN Plastic Utility Boxes have an added benefit that is conducive to many electrical applications. The plastic enclosures measure 4.38" x 4.38" and are just the right size to install directly over a standard 4 outlet electrical box or outlet. For any wall application the plastic enclosure can be installed using the optional wall mounting tabs. Or, they can be installed directly over a standard 4 outlet electrical box by drilling through the PC Board screw bosses.

These unique plastic enclosures are suitable for a variety of plastic housing requirements in addition to wall mounted or electrical applications. They feature a plastic molded top cover in three different heights and a flat plastic molded bottom. PC board mounting bosses are molded-in in all models. The boxes assemble easily using the four Plastite screws that are included.

**Custom Machining and Printing are available. Please call for more information.**



Results 1 - 6 of 6

Item #	Material	Height	Width	Length	Options	Features
075X44	94HB	0.725 in 18.415 mm	4.375 in 111.125 mm	4.375 in 111.125 mm	Mount Tabs	PC Board Bosses
120X44	94HB	1.225 in 31.115 mm	4.375 in 111.125 mm	4.375 in 111.125 mm	Mount Tabs	PC Board Bosses
170X44	94HB	1.725 in 453.815 mm	4.375 in 111.125 mm	4.375 in 111.125 mm	Mount Tabs	PC Board Bosses
UL-075X44	UL 94VO	0.725 in 18.415 mm	4.375 in 111.125 mm	4.375 in 111.125 mm	Mount Tabs	PC Board Bosses
UL-120X44	UL 94VO	1.225 in 31.115 mm	4.375 in 111.125 mm	4.375 in 111.125 mm	Mount Tabs	PC Board Bosses
UL-170X44	UL 94VO	1.725 in 453.815 mm	4.375 in 111.125 mm	4.375 in 111.125 mm	Mount Tabs	PC Board Bosses

Results 1 - 6 of 6